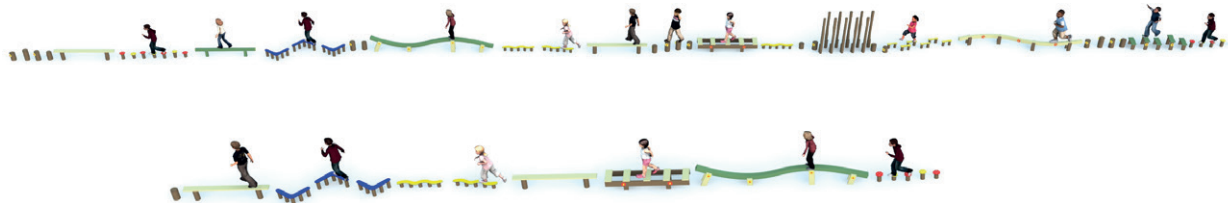
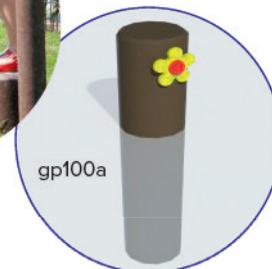




One of the elements will wear a type plate.



This item is TUV certified.
Age range 3 to 12 years



Description

GP100 is a balance trail installed in loose soil, such as grass and forest soil. The balance trail is considered as one equipment and consists of several standard elements. There is one certificate for the balance trail GP100 which can consist of the following elements: GP100a step pole, GP100c wavy balance beam, GP100e horizontal ladder, GP100d wide balance beam, GP100f step flower, GP100g zigzag balance beam, GP100h footsteps, GP100i boomerang, GP100j snake, GP100k xylophone, GP100l stilts, GP100m straight balance beam.

Mounting

Except for the wavy balance beam GP100c and the zigzag balance beam GP99g, all elements are delivered fully assembled.

Material

- Solid boards and posts made of recycled plastics (PE) coloured throughout
- Stainless steel screws
- Virgin PE material, UV resistant

Maintenance

The plastic material requires very little maintenance, that is cleaning with soapy water and a sponge or soft brush and rinsing with water to remove dirt and soap. As the materials' water absorption is less than 0.29%, it will not get stained by oil, grease or other products. Moss and

algae will not adhere easily and can easily be removed. Cleaning with high-pressure (max. 100 bar) is possible but not recommended and mostly even not necessary. Spray with a fan-shaped jet with minimum 30 cm distance from the surface. Painting or staining is useless as the material does not need extra protection and moreover the paint will not stick to the plastic.

Inspection Requirements

Visual inspection

Weekly or monthly, depending on the intensity of use.

Functional inspection

Monthly or four-monthly, depending on the intensity of use.

Detailed inspection

Yearly

Special attention during functional or detailed inspection:

- Check all parts are tight
- Check worn, loose, damaged, missing parts
- Check screws sticking out
- Check anchoring
- Check level soil (level indication)
- Check anchoring
- Check stability of stilts
- Vandalism?

Use original Govaplast parts when repairing is required, to ensure the TÜV certificate remains valid.

Installation

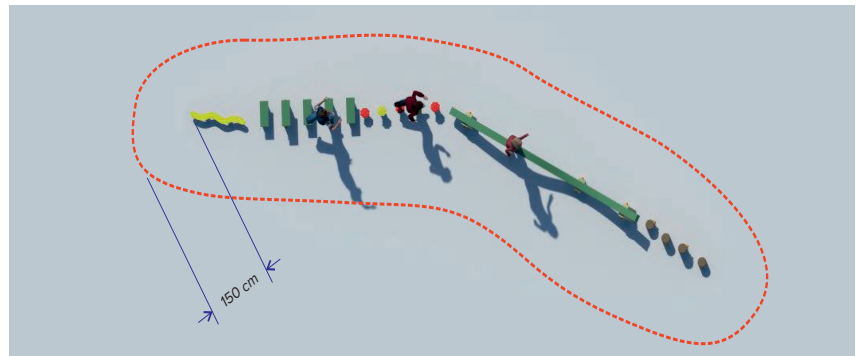
The installation needs to be done on grass or forest soil, anchored with sufficient stabilised sand. The equipment cannot be installed on a loose surface such as a sandpit, wood chips, bark mulch, because of stability. The elements are not large enough to be stabilised in loose material.

Security Zone

An obstacle-free area of minimum 150 cm around the equipment is required.

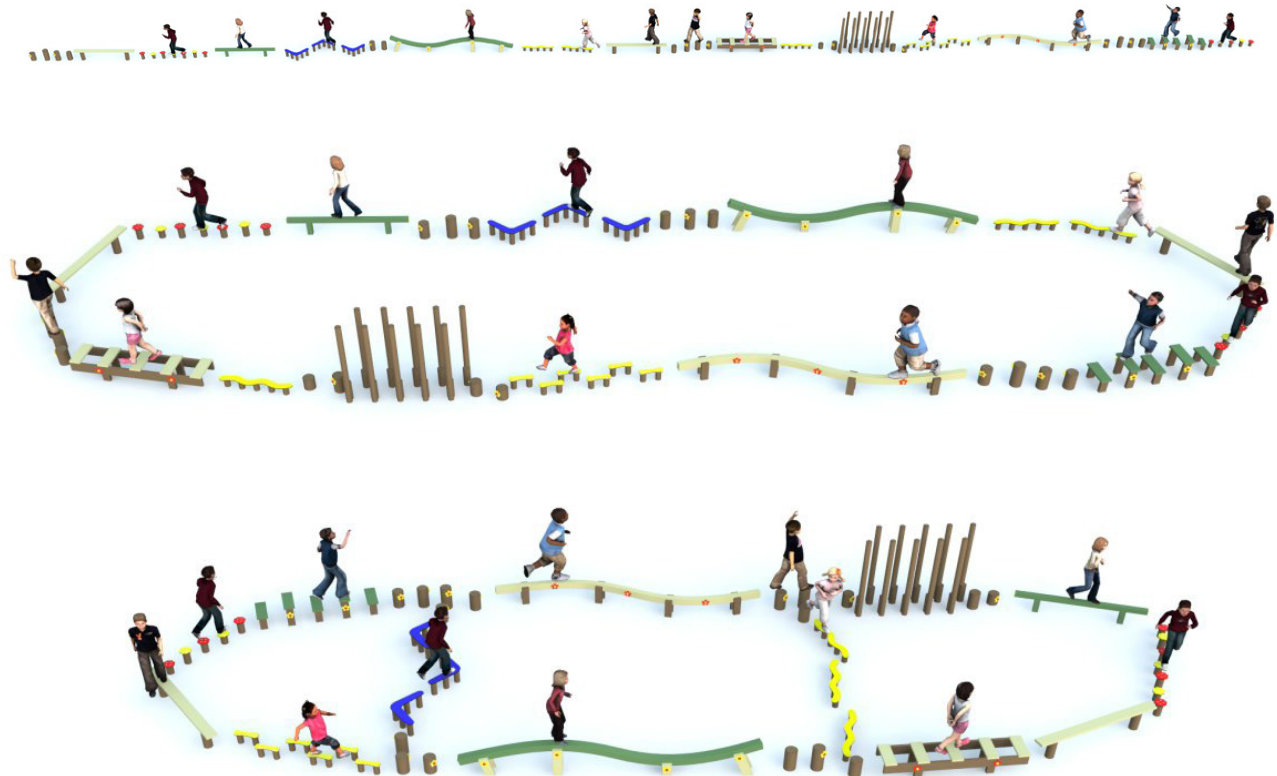
No fall absorption surface required

The equipment's fall height is less than 100 cm. Therefore it's allowed to install it in grass or forest soil.

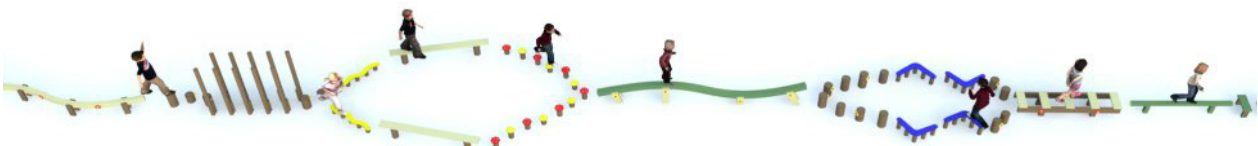


Several possible combinations

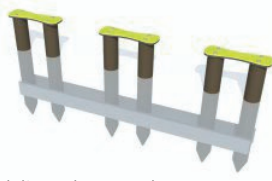
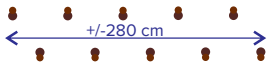
Examples of the same trail installed differently



Passing lanes can be created



Available elements

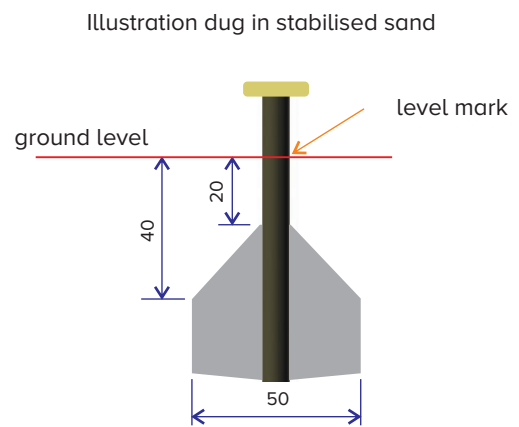
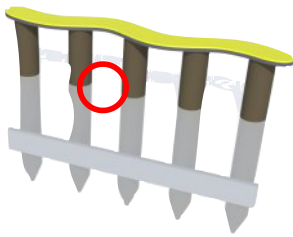
<p>GP100a step pole</p>  <p>diameter: 15cm weight: ± 10 kg</p> <p>level anchoring min. 15 cm from top max. 30 cm from bottom (not marked)</p> <p>delivered mounted</p>	<p>GP100g zigzag balance beam</p>  <p>length: 360 cm width walking surface: 8 cm weight: ± 59 kg</p> <p>level anchoring +/- 35 cm from top (marked)</p> <p>Delivered in 2 parts of +/- 190 cm (mounting screws Torx 25 supplied).</p>
<p>GP100m straight balance beam</p>  <p>length: 180 cm width walking surface: 8 cm weight: ± 21,3 kg</p> <p>level anchoring 30 cm from top (marked)</p> <p>delivered mounted</p>	<p>GP100h footsteps</p>  <p>length: ±142 cm surface steps: 10 x 32 cm weight: ± 26 kg</p> <p>Level anchoring 27 cm from top (marked)</p> <p>delivered mounted</p>
<p>GP100c wavy balance beam</p>  <p>length: ± 360 cm width walking surface: 15 cm weight: ± 64 kg</p> <p>level anchoring 27 cm from top of beige poles, highest point will be +/- 40 cm) (marked on 2 outer poles)</p> <p>Delivered in 2 parts of +/- 190 cm (mounting screws Torx 25 supplied).</p>	<p>GP100i boomerangs</p>  <p>length walking surface diagonal: 73 cm width walking surface: 10 cm weight: ±20 kg</p> <p>Level anchoring 27 cm from top (marked)</p> <p>delivered mounted</p>
<p>GP100d wide balance beam</p>  <p>length: 180 cm width walking surface: 15 cm weight: ±20,5 kg</p> <p>Level anchoring 27 cm from top (marked)</p> <p>delivered mounted</p>	<p>GP100j snakes</p>  <p>length: 90 cm Width walking surface: 10 cm weight: ±20 kg</p> <p>Level anchoring 27 cm from top (marked)</p> <p>delivered mounted</p>
<p>GP100e horizontal ladder</p>  <p>length: 180 cm 5 beams walking surface: 15 x 40 cm weight: ± 41 kg</p> <p>30 cm from top (marked)</p> <p>delivered mounted</p>	<p>GP100k xylophone</p>  <p>length: 180 cm 5 beams walking surface: 15 x 40 cm weight: ±46 kg</p> <p>30 cm from top lowest board (marked)</p> <p>delivered mounted</p>
<p>GP100f step flowers</p>  <p>diameter flowers: 17 cm weight: ±4,7 kg</p> <p>Level anchoring Min. 13 cm from top Max. 27 cm from top (not marked)</p> <p>delivered mounted</p>	<p>GP100l stilts</p>  <p>10 stilts with total length 200 cm Weight per stilt: ±13,2 kg length when installed : ±280 cm</p>  <p>Level anchoring 20 cm from top (marked on 1 stilt)</p> <p>delivered mounted</p>

Easy installation

Dig the holes, place the elements and anchor them with stabilised sand. Then fill the holes with soil... Remember to respect the minimum anchoring depth marked on the elements separately, respect the minimum-maximum distance between the elements and the obstacle-free area around the trail.



Required depth for anchoring with stabilised sand
Nearly each element has a level mark indicating the minimum depth of anchoring. Deeper anchoring is allowed.



A motorised auger can be used when the ground is tough.



e.g. operation by 2 persons,
diameter drill +/-30 cm



e.g. operation by 1 person



An excavator with auger can be used when the ground is full of stones, roots etc.

Do not remove the lock screws!

Some elements have lock screws to prevent that they can be pulled out of the stabilised sand. Do not remove them.



Distance between 2 elements

The distance between 2 elements of the trail is 25 cm minimum and 40 cm maximum, measured from stepping point to stepping point.



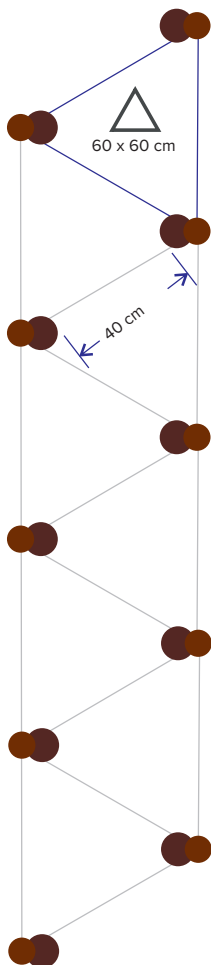
Configuration 10 stilts

GP100L

be sure to use enough stabilised sand (until max. 20 cm under ground level!)



Dug in until the level mark (20 cm from top of stepping surface, level mark on one the posts)



From post to post: equilateral triangles of 60 cm

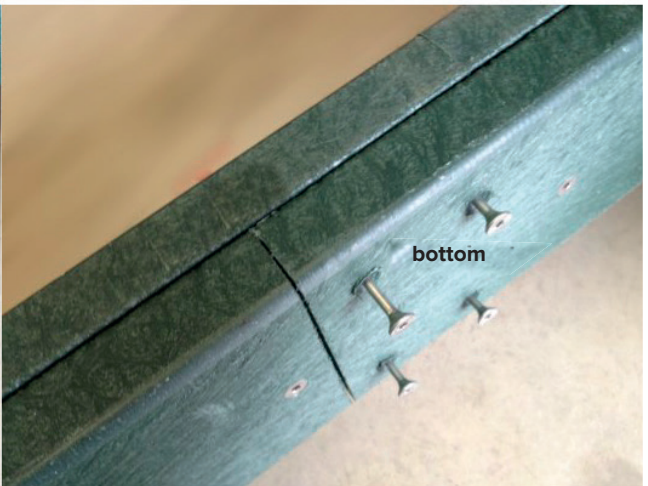
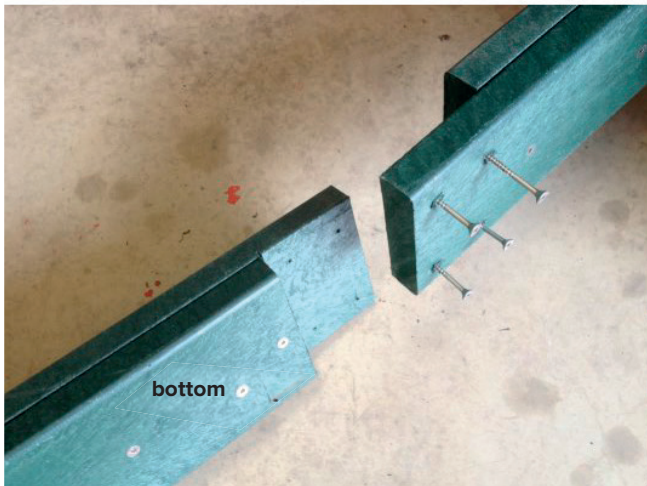


Alternative way to install the stilts: Connect the stilts with each other with a plastic board (screw) before installation. The use of stabilised sand is still required even though this method is more stable.



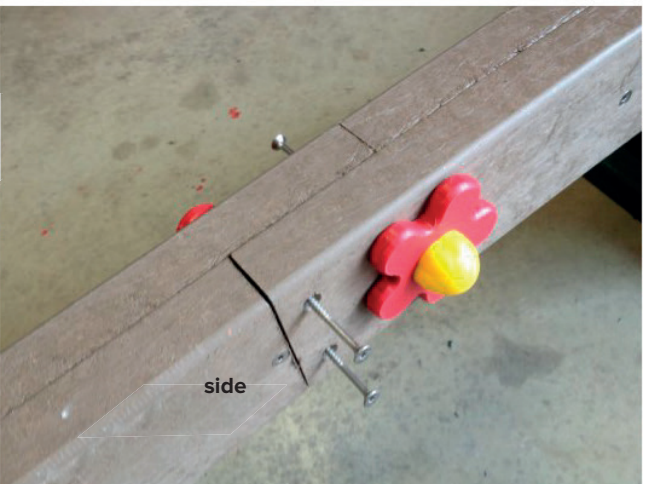
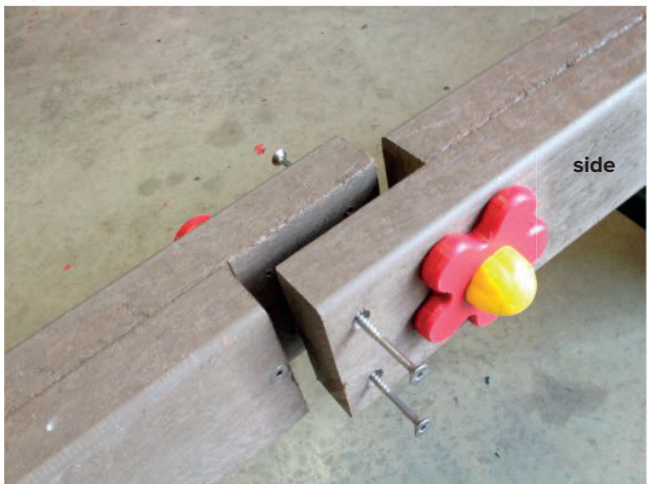
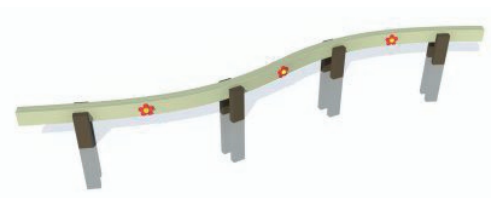
GP100G zigzag balance beam

Delivered in 2 parts of +/- 190 cm (mounting screws Torx 25 supplied).



GP100C wavy balance beam

Delivered in 2 parts of +/- 190 cm (mounting screws Torx 25 supplied).







**TYPE GOEDKEURING CERTIFICAAT
TYPE APPROVAL CERTIFICATE
Z-NL-19-04-224287-021-720302559-01REV1**

Met dit certificaat wordt verklaard dat het
With this certificate it is declared that

**Evenwichtsparcours om in gras of bosgrond te plaatsen
Balance Trail for installation in grass or forest soil**

met als type aanduiding
with type indication
GP100



geleverd door
delivered by
Govaerts Recycling n.v.
Kolmenstraat 1324 , 3570 Alken

voldoet aan de eisen gesteld in - fulfills the requirements of:
Warenwetbesluit attracties- en speeltoestellen

is gebaseerd op volgende beoordelingscriteria
and is based on assessment criteria
EN 1176-1:2017 EN 1176-7:2008

Dit certificaat wordt afgegeven door TÜV SÜD Benelux bvba, aangewezen bij ministeriële beschikking van 26.02.2019, 1487420-187346-VGP

This certificate is issued by TÜV SÜD Benelux, designated by ministerial arrangement on 26.02.2019, 1487420-187346-VGP



Accreditatie België ISO17020, I-358
Accreditation Belgium ISO 17020, I-358

Opgemaakt te – Place Boortmeerbeek op datum van - date: 05.12.2019

Naam - Name: Astrid De Beukelaer
Functie - Function: Expert Playground Equipment
Handtekening - Signature:



Benelux

Naam - Name: Emmanuel Ortegat
Functie - Function: Expert Playground Equipment
Handtekening - Signature:



Benelux

TYPE GOEDKEURING CERTIFICAAT
TYPE APPROVAL CERTIFICATE
Z-NL-19-04-224287-021-720302559-01REV1

Product omschrijving - Product description

Evenwichtsparcours is een reeks van evenwichtstoestellen die samengesteld kunnen worden. Toestellen op losse ondergrond te plaatsen volgens de handleiding.

Balancing trail is a series of balance playground equipments that can be put together. Install playground equipment on loose surface according to the manual.

Typenummer - Type indication: GP100

Het evenwichtsparcours wordt als 1 toestel aanzien en bestaat uit een aantal standaard elementen. Certificaat geldt voor het evenwichtsparcours waarbij volgende elementen geïntegreerd kunnen worden:

GP100a stappalen, GP100c golvende evenwichtsbalk, GP100d platte evenwichtsbalk, GP100e horizontale ladder, GP100f stapbloemen, GP100g zigzag evenwichtsbalk, GP100h voetzolen, GP100i boemerangs, GP100j slang, GP100k xylofoon, GP100l stelten, GP100m rechte evenwichtsbalk

The balance trail is considered as 1 playground equipment and consists of a number of standard elements:

GP100o step pole, GP100c wavy balance beam, GP100d wilde balance beam, GP100e horizontal ladder, GP100f step flower, GP100g zigzag balance beam, GP100h footsteps, GP100i boomerangs, GP100j snake, GP100k xylophone, GP100l stills, GP100m straight balance beam.

Afmetingen (l x b x h) - Dimensions (l x w x h): variable

Toepassingen en beperkingen - Applications and limitations

Dit attest heeft enkel betrekking tot het geïnspecteerde speeltoestel. Het rapport met nummer P-B-19-01-720302559-01-01rev2 bevat alle opmerkingen over dit speeltoestel.

Dit certificaat respecteert de richtlijnen en maatregelen die zijn opgenomen in het logboek van de fabrikant.

Wij houden eraan de uitbaters er attent op te maken dat zij op gepaste tijdstippen inspecties en onderhoud moeten uitvoeren en dit te documenteren, teneinde de toestellen en hun omgevingen in een goede staat te behouden.

Alle referenties naar documenten van het speeltoestel GP100 werden gecontroleerd.

Alle aanpassingen aan het geïnspecteerde speeltoestel, aan zijn samenstelling en de manier van samenstellen moeten voorgelegd worden aan TÜV SÜD Benelux en kunnen leiden tot een aanpassing van het certificaat.

Het is de taak van de fabrikant en/of de leveranciers om ervoor te zorgen dat alle gefabriceerde speeltoestellen van hetzelfde type als beschreven in dit certificaat conform zijn aan het model waarop dit certificaat gebaseerd is.

This certificate applies only to the inspected playground equipment. The report with number P-B-19-01-720302559-01-01rev2 contains all the comments about this playground equipment.



**TYPE GOEDKEURING CERTIFICAAT
TYPE APPROVAL CERTIFICATE
Z-NL-19-04-224287-021-720302559-01REV1**

This certificate respects the guidelines and measures included in the logbook from the manufacturer.

We coming to make the managers alert that they need to perform inspections and maintenance at appropriate times and document this in order the devices and their environments in a good state.

All references to documents of the playground equipment GP100 were checked.

All modifications to the inspected playground equipment, to its composition and the way of composing should be submitted to TÜV SÜD Benelux and can lead to an adjustment of the certificate.

It is the responsibility of the manufacturer and/or the suppliers to ensure that all manufactured playground equipment of the same type as described in this certificate comply with the model on which this certificate is based.

Documenten – Documents

Gebruikshandleiding – User's manual: GP100

Technisch constructie dossier – Technical construction file: GP100

Markering van het product - Product marking

Elk toestel dient te worden gemarkeerd met - Every product needs to be marked with:

- Naam en adres van de leverancier – Name and address of the supplier
- Bouwjaar- Year of construction
- Type

Opmerking - Remarks

In geval van discussies heeft de Nederlandse tekst voorrang.
In case of discussions the Dutch language prevails.

Einde certificaat / End of certificate